

On a budget? These stations offer professional quality at ec

Our Weather Wizard III and Weather Monitor II offer sophisticated, professional quality for home, business, or scientific use. Add WeatherLink for detailed, long-term analysis using your PC, and you'll have a powerful computer weather station at a surprisingly affordable price.



See the "Options & Accessories chart on page 18 for a complete look at which options may be used with which station.

Weather Monitor II®

A full-featured weather station. Basic model includes barometric pressure, inside and outside temperature, inside humidity, wind speed and direction, and wind chill. With the complete station, you'll also get outside humidity, dew point, and daily and accumulated rainfall. You'd pay \$200 for the outside humidity sensor and rain collector if purchased separately. Save \$100 with our Complete Weather Monitor II!

7440 Weather Monitor II \$295

7440CS Complete Weather Monitor II

with rain collector and temperature/humidity sensor \$395

NIST



Perception II®

An indoor weather station requiring no installation—just plug it in using the included AC-power adapter. Use to monitor your wine cellar, greenhouse, or other climate-dependent area. Measures temperature, humidity, and barometric pressure. So accurate, it's even used by automobile racers to tune their carburetors for current air density conditions. Backlit display for easy viewing.

NIST

7400 Perception II \$150



Rain Collector

Designed to meet the guidelines of the World Meteorological Organization, our self-emptying rain collector with tipping bucket is exceptionally accurate. Measures in 0.01" or 0.2 mm increments.

7852 Rain Collector for Wizard or Monitor \$75

Includes 40' (12 m) cable. Use Standard 4-Conductor Extension Cable. Maximum cable length is 900' (270 m) from rain collector to console including junction box cable.

7876-008 Cable, 8' (2.4 m) \$10

7876-100 Cable, 100' (30 m) \$40

7876-040 Cable, 40' (12 m) \$18

7876-200 Cable, 200' (60 m) \$70

NIST

Temperature/Humidity Sensor

Measures outside temperature, relative humidity, and dew point. For use with Weather Monitor II. Replaces the external temperature sensor included with the station.

7859 Temperature/Humidity Sensor for Monitor \$125

Includes 40' (12 m) cable. Use Standard 6-Conductor Extension Cable. Maximum cable length is 300' (91 m) from sensor to console including junction box cable.

7878-040 Cable, 40' (12 m) \$22



NIST

Perception II, Weather Wizard III, & Weather Monitor II



7440CS Complete Weather Monitor II

All stations include the following features:

- Time in 12- or 24-hour format and date.
- U.S. and metric units of measure.
- Highs and lows.
- Sequential scan and display of readings.
- Alarms for selected functions.
- Calibration of some functions for increased accuracy under difficult conditions.
- Backlighting of LCD display for easy viewing (except Weather Wizard III).

All stations include the following components:

- Console with reversible base for use on desk, shelf, or wall.
- AC-power adapter with battery backup (battery not included).
- Quick and easy plug-in cable connections using modular RJ connectors like those found on your telephone.

Wizard & Monitor stations also include:

- Anemometer with 40' (12 m) cable for wind speed and direction
- Outside temperature sensor with 25' (7.6 m) cable

Optional components include:

- Rain collector (for Wizard or Monitor)
- Temperature/humidity sensor (for Monitor only)

Extension cables:

Be sure to use the appropriate extension cable listed for each component. See the complete chart on page 20. Although the RJ connector may fit, most standard telephone extension cords are not compatible.

onomical prices.



Weather Wizard III®

The most-requested features at an economical price. Basic model includes inside and outside temperature, wind speed and direction, and wind chill. With the complete station, you'll also get daily and accumulated rainfall. You'd pay \$75 for the rain collector if purchased separately. Save \$20 with our Complete Weather Wizard III!

7425 Weather Wizard III \$195

7425CS Complete Weather Wizard III with rain collector \$250



Radiation Shield

The most effective passive shelter available. Protects temperature sensor from solar radiation and other sources of radiated and reflected heat. Multi-plate construction for maximum airflow. Assembly required.

7714 Radiation Shield \$65

For Wizard or Monitor, or for Wireless Temperature Station or Leaf & Soil Moisture/Temperature Station



Rain Collector Shelf

Provides a horizontal surface for mounting the Rain Collector. May be used with Sensor Mounting Arm or mounted on other structures or surfaces. Aluminum shelf is white powder coated for added durability.

7704 Rain Collector Shelf \$35



Sensor Mounting Arm

For use with Weather Wizard III or Weather Monitor II. Aluminum arm is white powder coated for added durability. Includes mounting hardware and ground wire.

7702 Sensor Mounting Arm \$65



Link Isolator Kit

For upgraded protection against electrical disturbances, install the Link Isolator between the WeatherLink data logger and your computer. Includes 40' (12 m) cable and power adapter. For use with WeatherLink models 7862 or 7855 only. For other models, equivalent protection is already built in.

7764 Link Isolator Kit \$55



Protected Junction Box

Provides upgraded protection against the electrical disturbances that can come through sensor cables, including radio frequency interference, electrostatic discharges, and voltage surges. Includes two 16' (5 m) ground wires. For use with Weather Monitor II or Weather Wizard III only.

7740 Protected Junction Box \$65



Choose the station that suits your needs	Perception II	Weather Wizard III	Complete Weather Wizard III	Weather Monitor II	Complete Weather Monitor II
Barometric Pressure	●			●	●
Inside Temperature	●	●	●	●	●
Outside Temperature		●	●	●	●
Wind Direction		●	●	●	●
Wind Speed		●	●	●	●
Wind Chill		●	●	●	●
Rainfall		Optional	●	Optional	●
Inside Humidity	●			●	●
Outside Humidity				Optional	●
Dew Point				Optional	●

Wizard and Monitor calculate and display wind chill according to the original National Weather Service Formula. A new formula was adopted in 2001. For wind chill using this formula, view the data using WeatherLink or choose Vantage Pro2 instead.

Your weather data, your PC. What could be better?



For the ultimate in weather monitoring, add WeatherLink® to any of our weather stations. The data logger fits neatly into the weather station console or Weather Envoy, storing weather data even when it's not connected to your PC. Later, download the data and use the software for detailed analysis and graphing.

Data Storage & Transfer

- **User-Selectable Storage Interval.** Choose 1, 5, 10, 15, 30, 60, or 120 minutes. Store up to six months' worth of data depending on the storage interval. (Up to four months for Perception, Wizard, or Monitor.)
- **Standard Data Logger Models.** Log and store data, even when the data logger is not connected to your PC. Transfer the data as often as you like, or leave the software running to transfer it automatically each day.
- **Alarm Output & Irrigation Control Models.** Include our standard data logger plus a connector block that allows you to connect your Vantage Pro2 console or Weather Envoy to your irrigation system or to a heater, fan, or other device.
- **Streaming Data Logger Models.** Provide a continuous stream of data to a PC or to a ham radio with a TNC modem. At the same time, they'll log and store the data for later download—just like our standard data loggers!

Expanded Reporting

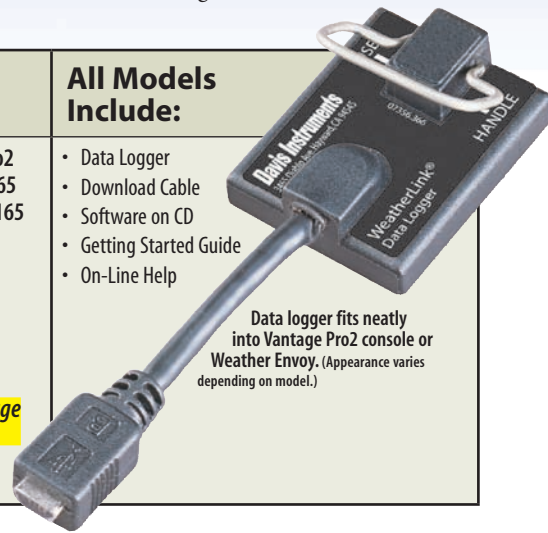
- **More Weather Data.** View weather information not available on the console, including heating degree days, cooling degree days, and fuel-oil demand.
- **Optional Sensor Reporting.** With optional UV and solar radiation sensors, get details on sunburn risk and solar energy.
- **Forecast & Moon Phase.** With Vantage Pro2, you can see the forecast and moon phase right on the console. But now even Wizard and Monitor owners can get the latest forecast and view the phases of the moon using WeatherLink.

Sharing Your Weather Data

- **Create Your Own Reports.** Data can be exported to most popular spreadsheets, databases, and word processing programs.
- **Weather Website.** Create your own weather website or post weather conditions to a LAN. Add graphs, text lines, or scrolling ticker tapes, and upload other files (such as webcam images) along with weather data.
- **Weather World 'Round.** Send your URL to news@davisnet.com and we'll add it to our growing list of Davis stations around the world.
- **Citizen Weather Observer Program.** Submit your data to the National Weather Service to help develop improved weather prediction models.
- **The GLOBE Program.** Participate with other schools in an international weather-related program for students from elementary through high school.



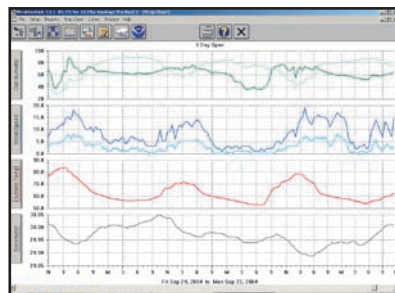
Standard Data Logger Models	All Models Include:
<p>WeatherLink for Vantage Pro2 6510USB Windows USB Version \$165 6510SER Windows Serial Version \$165 6520 Mac OS X Version \$165</p> <p>WeatherLink for Perception, Wizard, or Monitor 7862 Windows Serial Version \$165 7855 Mac OS X Version \$165</p> <p><i>See the chart on the next page for more details.</i></p>	<ul style="list-style-type: none"> • Data Logger • Download Cable • Software on CD • Getting Started Guide • On-Line Help <p>Data logger fits neatly into Vantage Pro2 console or Weather Envoy. (Appearance varies depending on model.)</p>



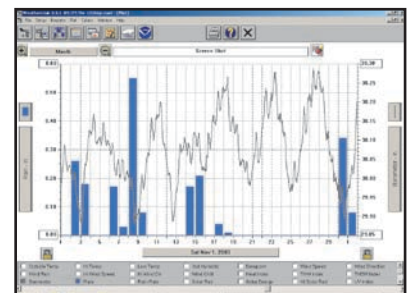
Actual screens may vary.



See current conditions at a glance on the instant weather bulletin.



Graph data on a daily, weekly, or yearly basis.



View multiple weather variables at the same time to see their relationships.

When there's no time to waste. WeatherLink gives you the critical data you need—now!



WeatherLink for Emergency Response Teams with Streaming Data Logger

For use with the free CAMEO® (Computer-Aided Management of Emergency Operations) software developed by NOAA and the EPA. With Vantage Pro2 or Weather Envoy, provides the real-time weather data needed to map the footprint of a hazardous plume, predict its dispersion, and help make critical public safety decisions—all at just a fraction of the cost of other systems. For more about CAMEO, visit www.epa.gov/ceppo/cameo.

6550 WeatherLink for Emergency Response Teams \$295

WeatherLink for APRS with Streaming Data Logger

For ham radio operators, including storm chasers and volunteer weather watchers. Connects a Vantage Pro2 console or Weather Envoy to a ham radio with TNC modem for instant transmission of both your location and the local weather conditions via APRS.

6540 WeatherLink for APRS \$195



With his chase vehicle outfitted with a Vantage Pro2, John Van Pelt of StormStudy.com keeps an eye on approaching hurricanes and tornadoes.

WeatherLink for Alarm Output with Connector Block



Now you can turn heaters, fans, and other devices on or off using your weather station. Software walks you quickly and easily through the choices—yet the possibilities are almost unlimited! For each of four outputs, you can enter up to eight different weather parameters. Enter threshold values for each, select from nine different test conditions, and link the entries together as you choose. For example, you could activate a fan to cool your house—but only if the difference between the inside and outside temperatures is more than 5°F, it's more than 72°F inside, and it's between 5:00 p.m. and 6:00 a.m. Our connector block provides the interface between your weather station and an electrical device. For high-power devices, you may also need to add electrical relays (not supplied by Davis).

6544 WeatherLink for Alarm Output \$295

WeatherLink for Irrigation Control with Connector Block

Use your weather station to turn your irrigation system on or off. Connector block connects directly to most irrigation systems including Rain Bird, Rain Master, and Toro. For industrial controllers, provides electronic pulses for wind, rain, and ET. For homeowners, looks at rain and ET values to determine when to inhibit watering. Can also set console alarms to inhibit watering when temperatures are too low or winds are too high. ET monitoring requires solar radiation sensor. Connection to a PC is not required except for initial setup.

6560 WeatherLink for Irrigation Control \$295

Choose from nine different WeatherLink models.

Extra User License Kit includes software on CD and extra user license.

System Requirements	Model	Price	For Use With	Designed For	Data Logger	Notes	Extra User License Kit
Windows, USB Windows 98SE/2000/ME/XP	6510USB	\$165	Vantage Pro, Vantage Pro2, or Weather Envoy	General Purpose	Standard	For newer PCs with USB connections	6510X \$25
Windows, Serial Windows 95/NT4.0/98/2000/ME/XP	6510SER	165	Vantage Pro, Vantage Pro2, or Weather Envoy	General Purpose	Standard	For older PCs with serial port connections. Weather website features require Internet Explorer 4 or above.	6510X 25
All models with streaming data loggers or connector blocks include all our normal WeatherLink features, plus additional features designed for special purposes. To download one of these models via USB, add our # 8434 USB-to-Serial Cable \$20	6540	195	Vantage Pro, Vantage Pro2, or Weather Envoy	APRS (Ham Radio)	Streaming	Connects to a ham radio with TNC modem.	6510X 25
	6544	295	Vantage Pro, Vantage Pro2, or Weather Envoy	Alarm Output	Standard plus Connector Block	Use to turn heaters, fans, or other devices on or off depending on weather conditions. (For high-power devices, you may also need to add electrical relays.)	6510X 25
	6550	295	Vantage Pro, Vantage Pro2, or Weather Envoy	Emergency Response	Streaming	For use with the free CAMEO software developed by NOAA and the EPA.	6510X 25
	6560	295	Vantage Pro, Vantage Pro2, or Weather Envoy	Irrigation Control	Standard plus Connector Block	Connects directly to irrigation system. Connection to a PC is not required except for initial setup.	6510X 25
	7862	165	Perception, Weather Wizard, or Weather Monitor	General Purpose	Standard	For older PCs with serial port connection. Weather website features require Internet Explorer 4 or above.	7862X 25
Mac Mac OS X v 10.1 or above	6520	165	Vantage Pro, Vantage Pro2, or Weather Envoy	General Purpose	Standard	Does not log data from leaf wetness, soil moisture, solar radiation, or UV sensors. Does not include Citizen Weather Observer or GLOBE capabilities.	6520X 25
	7855	165	Perception, Weather Wizard, or Weather Monitor	General Purpose	Standard	Requires a USB serial adapter. Does not include Citizen Weather Observer, GLOBE, weather forecast, or moon phase features.	7855X 25

Plug-in modules expand WeatherLink's capabilities.



On his 1400-acre corn and soybean farm in Iowa, Al Schafbuch uses WeatherLink to track degree days and rainfall.

For use with WeatherLink 6510USB, 6510SER, 6540, 6544, 6550, 6560, or 7862. Some reports require the use of optional sensors. For owners of GroWeather who wish to upgrade to Vantage Pro2, includes the ability to import files from GroWeatherLink.

Agricultural/Turf Management Software Module

Optional software module adds specialized reports for farmers, growers, and turf managers, with user-defined growing season and 24-hour period. You'll get evapotranspiration, chilling requirement, leaf wetness hours, and soil temperature hours—all with user-entered thresholds and starting and ending dates. Plus growing degree-days and temperature-humidity hours (with user-entered names of crops, pests, or diseases) and crop water management (with irrigation values and user-entered K-factor profiles).

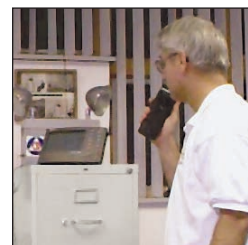
6511 Agricultural/Turf Management Module \$95

E-Mail/Phone Alert Software Module

Be alerted whenever conditions approach critical—24 hours a day, 7 days a week. Choose e-mail for detailed information on alarm conditions plus regularly scheduled updates on current weather conditions. Or choose the phone alert, with a special alarm tone telling you to check your weather station console or WeatherLink for details.

6512 E-Mail/Phone Alert Module \$35

For use with WeatherLink 6510USB, 6510SER, 6540, 6544, 6550, 6560, or 7862. Because systems vary, the phone alert may not work outside the USA.



Eugene Kramer, coordinator of the Emergency Services & Disaster Agency in Freeburg, Illinois relies on Vantage Pro for critical real-time data on weather conditions.

Receive data directly from the outdoor sensors—no console required!

Weather Envoy, when used along with WeatherLink, will collect and store data from the outdoor sensors. Download to your computer at your convenience, then use the WeatherLink software to view current conditions, graph and chart historical data, or even create your own weather web pages.

Weather Envoy™

Weather Envoy includes its own barometer and inside temperature and humidity sensors. Both the wireless and cabled versions include an AC-power adapter. Either may also be run using one of our solar power kits. The wireless model may also be run using three AAA batteries. Expected battery life is four to six months, depending on the logging interval. Batteries should also be added to the cabled model for backup during power outages.

6316 Wireless Weather Envoy \$195
6316C Cabled Weather Envoy \$165



Requires WeatherLink data logger and software package (not included). See pages 12–13.



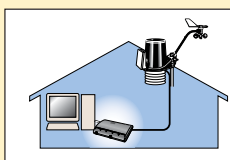
Shown with WeatherLink data logger installed.



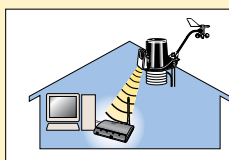
6328 with 24-Hour Fan-Aspirated Radiation Shield

Save up to \$100 by using Weather Envoy instead of a Vantage Pro2 console or console/receiver.

Install wireless or cabled Weather Envoy in your home or office, next to your computer for easy and convenient downloading. For field installation options, see page 21.

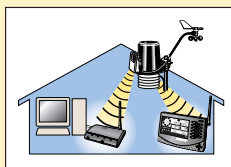


Cabled Home/Office Station

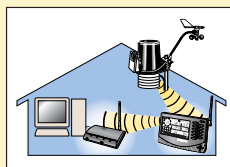


Wireless Home/Office Station

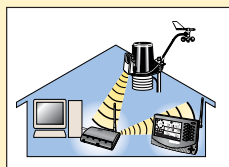
Or use in addition to a wireless Vantage Pro2 console/receiver.



Transmit to both simultaneously



Retransmit data to Weather Envoy



Retransmit from Weather Envoy

A cabled Weather Envoy can be used with ONE of the following:

- Cabled Integrated Sensor Suite, or
- Cabled Integrated Sensor Suite Plus

A wireless Weather Envoy can be used with ALL of the following:

- One wireless Integrated Sensor Suite or Integrated Sensor Suite Plus
- One Anemometer Transmitter Kit
- One Leaf & Soil Moisture/Temperature Station
- Three Temperature Stations or one Temperature Station and two Temperature/Humidity Stations.

Integrated Sensor Suite

For use with Weather Envoy and WeatherLink. Includes all the features of the Vantage Pro2 or Pro2 Plus integrated sensor suites shown on pages 4–5. Mounting pole not included.



Wireless Integrated Sensor Suite
6322 with Standard Radiation Shield \$325
6323 with 24-Hour Fan-Aspirated Radiation Shield \$525

Cabled Integrated Sensor Suite
6322C with Standard Radiation Shield \$275

Wireless Integrated Sensor Suite Plus with UV and solar radiation sensors
6327 with Standard Radiation Shield \$725
6328 with 24-Hour Fan-Aspirated Radiation Shield \$925

Cabled Integrated Sensor Suite Plus with UV and solar radiation sensors
6327C with Standard Radiation Shield \$675