

Remote locations? No problem.

Add a shelter, solar power kit, or telephone modem adapter.

Solar Power Kit for Wireless Vantage Pro2 or Wireless Weather Envoy

Powers the wireless console/receiver or Weather Envoy. (Outdoor sensors are powered by the solar panel that is included with the station.) Includes solar panel, regulator circuit, rechargeable battery, and 20' (6 m) cable.

6610 Solar Power Kit for Wireless Vantage Pro2 \$150



Solar Power Kit for Cabled Vantage Pro2 or Cabled Weather Envoy

Powers both the console (or Weather Envoy) and the outdoor sensors. Includes solar panel, regulator circuit, rechargeable battery, and 16' (4.9 m) cable.

7707 Solar Power Kit for Cabled Vantage Pro2 \$250



Glenn Waldner snapped this photo at his home in Manitoba, Canada, where wintertime temperatures drop to -40°C and below. He writes, "I had been looking for a weather station for quite awhile. I looked at other brands, but picked the wireless Vantage Pro2 because it was the closest to what I wanted at a good price, and it's expandable!"

Rain Collector Heater



For use in cold climates to measure freezing rain or the moisture content of snowfall. Requires access to AC power; may not be run using a solar power kit. Includes 24-watt, 24-volt heater with thermal cut-off switch, control unit, insulating reflective blanket, and AC-power adapter.

7720 Rain Collector Heater \$160

Includes 50' (15 m) cable. Use Shielded 4-Conductor Extension Cable. Maximum cable length is 120' (36 m).
7895-050 Cable, 50' (15 m) \$25 7895-100 Cable, 100' (30 m) \$48



Warren Rytting of Rytting Farms in Colorado, shown here with his son Zach, writes, "I have been using your Weather Wizard III for years at home, and have enjoyed it greatly. So when I started my own potato farm this year, it was a no-brainer who I was going to trust in the field (literally). I ordered your Vantage Pro2 with a Leaf & Soil Moisture/Temperature station and Weatherlink software. I live 15 miles away from my field, so it's hard to be there every second of the day. The Vantage Pro 2 has helped me with irrigation scheduling and weather forecasting. Thanks for a quality product."

Complete System Shelter

To locate your station console and other components outside, at a field or remote location. Weather-resistant NEMA 4X enclosure provides protection from the elements for the Vantage Pro2 console or console/receiver with WeatherLink data logger. Measures $15\frac{1}{2}'' \times 7\frac{3}{4}'' \times 13\frac{1}{2}''$ ($395 \times 195 \times 345$ mm).

7724 Complete System Shelter \$225



Complete System Shelter with Vantage Pro2 console.

Multi-Purpose Shelter

Use to shelter any of the following sub-systems:

- Weather Envoy with WeatherLink data logger.
- Weather Wizard III or Weather Monitor II console with WeatherLink data logger and protected junction box.

Measures $3\frac{3}{4}'' \times 9\frac{1}{2}'' \times 12\frac{1}{2}''$ ($95 \times 240 \times 320$ mm).

7728 Multi-Purpose Shelter \$75



Multi-Purpose Shelter with Weather Envoy.

Telephone Modem Adapter

For transmission of data from any of the serial port versions of our WeatherLink data loggers using a modem.



Telephone Modem Adapter

6533 for WeatherLink for Vantage Pro2 \$7
7870 for WeatherLink for Wizard/Monitor \$7

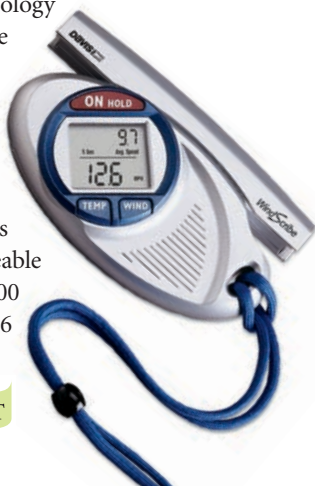
On the go? Take along a pocket-sized wind speed indicator.

WindScribe™

Ultrasonic wind meter uses patented technology to read current wind speed, highest positive speed (headwind), lowest negative speed (tailwind), 5-second average, and running average. Select from mph, km/h, fpm, m/s, f/s, or knots, plus temperature and wind chill in tenths of °F or °C. Sensitive to breezes as low as 0.4 mph, yet withstands winds as high as 150 mph. Includes replaceable 3-volt lithium battery. Battery lasts up to 600 hours. Dimensions: 5" x 3" x 3/4" (12.7 x 7.6 x 1.9 cm). Weight: 3 1/2 oz (100 grams).

276 WindScribe \$129

NIST



Use Three Ways



Handheld with adjustable lanyard.



Tripod mount with 1/4" thread.



Mounting bracket with Velcro® strap.

Hand-Held Wind Speed Indicators

For instantaneous wind speed readings, where you need them, when you need them. Rugged, high-impact plastic with corrosion-resistant components, protective vinyl case, and attached wrist lanyard.

Wind Wizard™

Reads wind speed in miles/hour, meters/second, and Beaufort. Readout dial is supported on sapphire jewel bearings and steadied by a rare-earth magnetic dampening system. Folding handle quickly and securely latches into place. No batteries needed. Dimensions: 3 5/8" x 2 7/8" x 1" (92 x 73 x 25 mm) with handle folded. Weight: 2.5 oz (71 g).

281 Wind Wizard \$49⁹⁹



Turbo Meter™

Reads wind speed in miles/hour, knots, feet/minute, or meters/second. Turbine suspended on sapphire jewel bearings responds to the lightest of winds. Three-digit display offers excellent viewing contrast in bright sunlight or at night. Requires three AAA alkaline batteries (not included). Dimensions: 4 5/8" x 2 5/8" x 1 1/8" (118 x 66 x 30 mm). Weight: 3 oz (85 g) not including batteries.

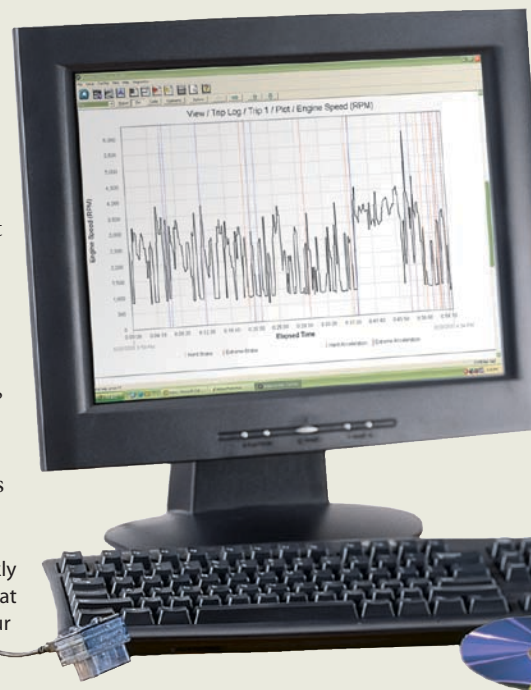
271 Turbo Meter \$165



NIST

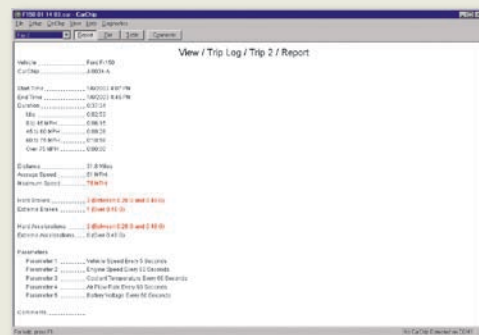
In addition to weather stations, Davis Instruments also has a complete line of vehicle monitoring systems. First introduced in 1994, our DriveRight on-board consoles and Fleet Management Software are used by business and industry around the world. Now, with the introduction of CarChip, that same powerful data logging is available to you.

CarChip downloads quickly and easily to your PC. See at a glance how you—or your teen—are driving.

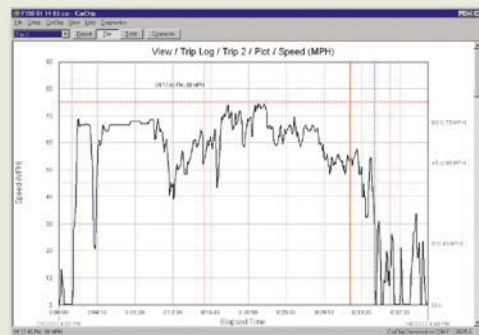


Trip log includes:

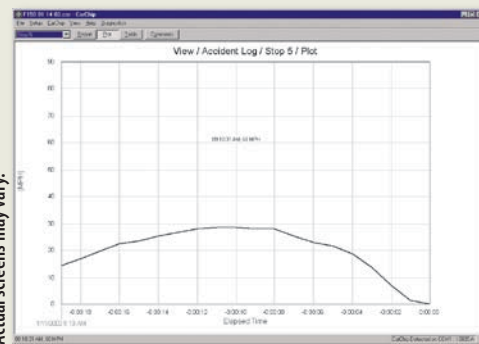
- Time & Date
- Distance
- Average Speed
- Maximum Speed
- Hard Brakings
- Quick Accelerations



Speed is recorded every 5 seconds. Hard brakings are highlighted in red, quick accelerations in blue.



Accident log shows the speed for each of the last 20 seconds before coming to a complete stop. (E/X models only.)



Actual screens may vary.

Think your teen is a safe driver? Don't wait to find out.

CarChip®. Don't wait for a speeding ticket—or worse—to find out how your teen is driving. CarChip plugs instantly into the OBDII (on-board diagnostics) port in your car or truck, where it continuously logs vehicle and driver performance. Download the data to your PC, and you'll get complete details for each trip plus details on engine performance when and if the vehicle's check engine light comes on. Stores up to 75 hours of driving data. Download the data at any time and clear the memory to start again, or let CarChip automatically overwrite the oldest data.

8211 CarChip \$139

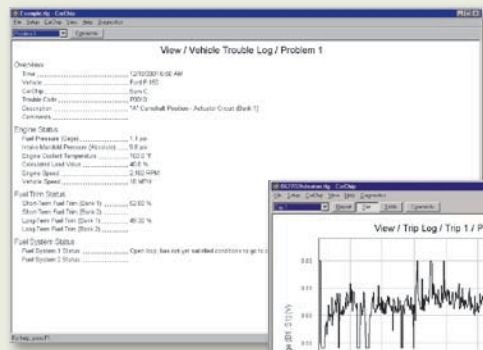
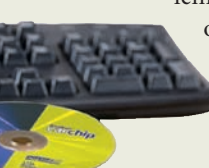
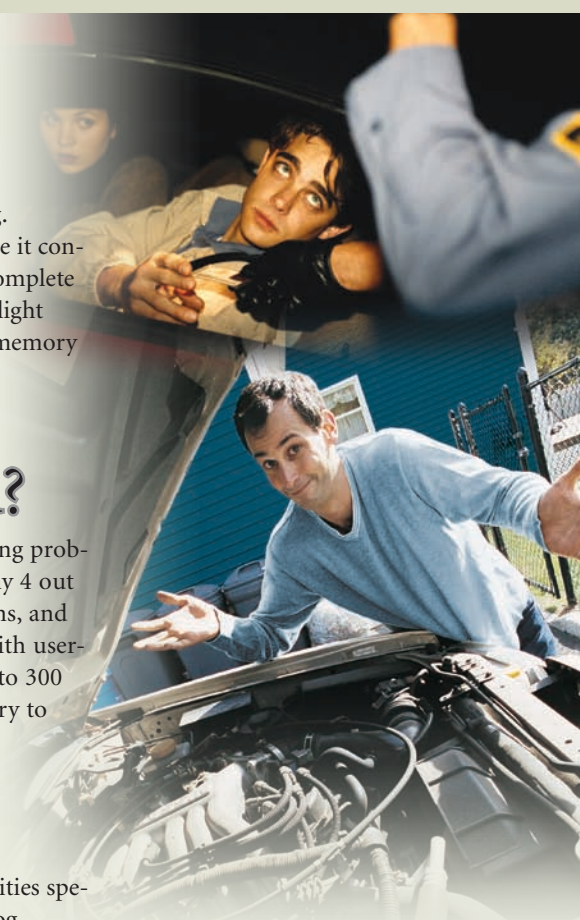
Wish you could read your car's mind?

CarChipE/X®. By detecting malfunctions early and taking the guesswork out of diagnosing problems, CarChipE/X can help you keep your car in peak running condition. Log any 4 out of 23 possible engine parameters, each of which can affect operation, emissions, and fuel economy. Choose standard CarChipE/X or CarChipE/X with Alarm, with user-settable alarms for speed, hard braking, and quick acceleration. Stores up to 300 hours of driving data. Download the data at any time and clear the memory to start again, or let CarChipE/X automatically overwrite the oldest data.

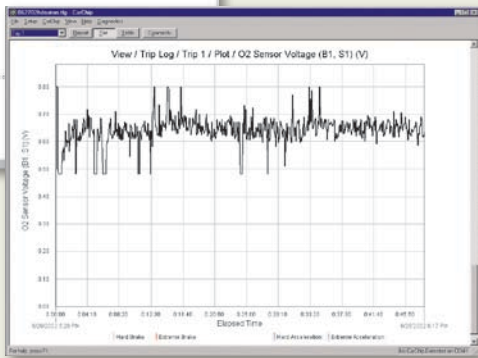
8221 CarChipE/X \$179

8225 CarChipE/X with Alarm \$199

CarChip Fleet. CarChip is also available in a fleet model with additional reporting capabilities specially designed for fleet managers. For more information, ask for our full-line DriveRight catalog.



Trouble log shows diagnostic trouble code and description plus additional details on engine performance.



Oxygen sensor voltage is just one of the 23 selectable engine parameters you can choose to monitor. (E/X models only.)

Installation couldn't be easier.

1. Locate your car's OBDII connector.

You'll find it inside the car, no more than three feet from the driver's seat.

2. Plug the data logger in.

The blinking light tells you it's installed and ready to go.

3. Start driving.

CarChip will start collecting data your very next trip. Later, download to your PC for analysis, graphing, and charting.



CarChip®

Records 75 hours of trip details:

- Time and date for each trip.
- Distance traveled.
- Speed (logged every five seconds).
- Idle time.
- Hard accelerations and decelerations.
- Engine diagnostic trouble codes plus the status of engine parameters at the time the codes occurred.
- Time and date every time CarChip is connected or disconnected.

CarChipE/X®

Records 300 hours of trip details:

- All the features of CarChip.
- Up to 4 out of 23 possible engine parameters, recorded every 5 to 60 seconds. Choose from:

| | |
|----------------------|--------------------------------------|
| RPM | Battery voltage |
| Throttle position | Timing advance |
| Engine load | Coolant temperature |
| Fuel pressure | Air flow rate |
| Fuel system status | Intake air temperature |
| Short-term fuel trim | Intake manifold pressure |
| Long-term fuel trim | O ₂ sensor output voltage |

Software lets you:

- Review and clear diagnostic trouble codes.
- View summary and detail reports for each trip, including vehicle speed every 5 seconds.
- Set thresholds for speed, acceleration, and braking, and view the number of times these thresholds were exceeded.
- Copy data to spreadsheets and text documents for further analysis.

System requirements:

- Windows 98SE/2000/ME/XP and USB port.

For most cars and trucks sold in the USA and Canada, model-years 1996 or later. For a list of excluded vehicles, visit www.carchip.com. Vehicles sold outside the USA and Canada may or may not be compatible.